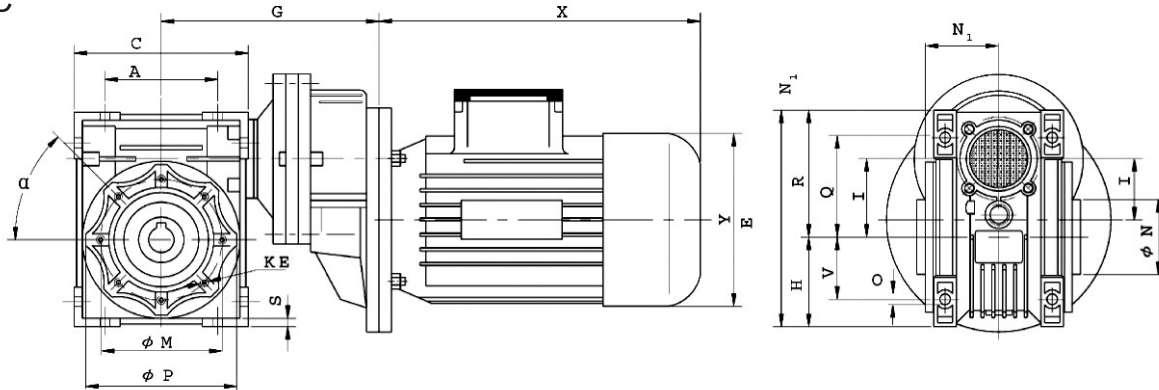


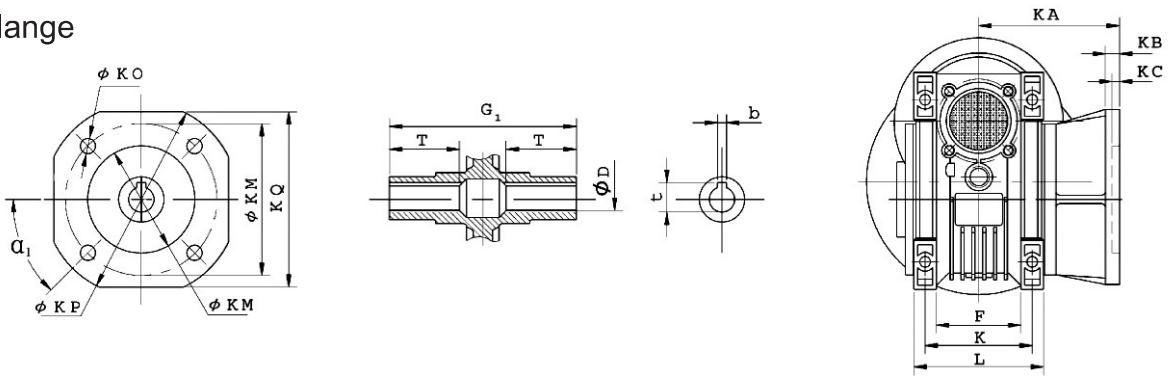


BLM-BC (HELI-WORM) SERIES INSTALLATION DIMENSIONS

BLM-BC



Output Flange



Size	A	C	D(H7)	E	F	G	G ₁	H	I ₁	I	I	M	N(h8)	N ₁	O	P	Q	R	S	T	V	K	KA			KB			KC	KE	α	α ₁
																							F	FB	FL	F	FB	FL				
40/63	70	100	18(19)	121.5	43	123	123	50	40	40	71	75	60	36.5	6.5	87	55	71.5	6.5	25	35	60	67	76.5	97	7	9	7	4(5)	M6 x 8 (n.4)	45°	45°
50/63	80	120	25(24)	144	49	133	133	60	50	40	85	85	70	43.5	8.5	100	64	84	7	30	40	70	90	87.5	120	9	10	9	5(5)	M8 x 10 (n.4)	45°	45°
50/71	80	120	25(24)	144	49	143	143	60	50	50	85	85	70	43.5	8.5	100	64	84	7	30	40	70	90	87.5	120	9	10	9	5(5)	M8 x 10 (n.4)	45°	45°
63/63	100	144	25(28)	174	67	148	148	72	63	40	103	95	80	53	8.5	110	80	102	8	36	50	85	82	99	112	10	11	10	6(5)	M8 x 14 (n.8)	45°	45°
63/71	100	144	25(28)	174	67	158	158	72	63	50	103	95	80	53	8.5	110	80	102	8	40	50	85	82	99	112	10	11	10	6(5)	M8 x 14 (n.8)	45°	45°
75/71	120	172	28(35)	205	72	176	176	86	75	50	112	115	95	57	11	140	93	119	10	40	60	90	111	-	-	13	-	-	6	M8 x 14 (n.8)	45°	45°
75/80	120	172	28(35)	205	72	186	186	86	75	63	112	115	95	57	11	140	93	119	10	40	60	90	111	-	-	13	-	-	6	M8 x 14 (n.8)	45°	45°
90/71	140	208	35(38)	238	74	193	193	103	90	50	130	130	110	67	13	160	102	135	11	45	70	100	111	-	-	13	-	-	6	M10 x 18 (n.8)	45°	45°
90/80	140	208	35(38)	238	74	203	203	103	90	63	130	130	110	67	13	160	102	135	11	45	70	100	111	-	-	13	-	-	6	M10 x 18 (n.8)	45°	45°
110/80(90)	170	252.5	42	295	-	233	233	127.5	110	63	144	165	130	74	14	200	125	167.5	14	50	85	115	131	-	-	15	-	-	6	M10 x 18 (n.8)	45°	45°
130/80(90)	200	292.5	45	335	-	253	253	147.5	130	63	155	215	180	81	16	250	140	187.5	15	60	100	120	140	-	-	15	-	-	6	M12 x 21 (n.8)	45°	45°

Size	KM			KN (H8)			KO			KP			KQ			b	t	Kg
	A	FB	FL	F	FB	FL	F	FB	FL	F	FB	FL	F	FB	FL			
40/63	87	115	87	60	95	60	9(n,4)	9.5(n,4)	9(n,4)	110	140	110	95	-	95	6(6)	20.8 (21.8)	3.9
50/63	90	130	90	70	110	70	11(n,4)	9.5(n,4)	11(n,4)	125	160	125	110	-	110	8(8)	28.3 (27.3)	5.2
50/71	90	130	90	70	110	70	11(n,4)	9.5(n,4)	11(n,4)	125	160	125	110	-	110	8(8)	28.3 (27.3)	5.8
63/63	150	165	150	115	130	115	11(n,4)	11(n,4)	11(n,4)	180	200	180	142	-	142	8(8)	28.3 (31.3)	7.9
63/71	150	165	150	115	130	115	11(n,4)	11(n,4)	11(n,4)	180	200	180	142	-	142	8(8)	28.3 (31.3)	8.5
75/71	165	-	-	130	-	-	14(n,4)	-	-	200	-	-	170	-	-	8(10)	31.3 (38.3)	11.3
75/80	165	-	-	130	-	-	14(n,4)	-	-	200	-	-	170	-	-	8(10)	31.3 (38.3)	13.1
90/71	175	-	-	152	-	-	14(n,4)	-	-	210	-	-	200	-	-	10(10)	38.3 (41.3)	15.3
90/80	175	-	-	152	-	-	14(n,4)	-	-	210	-	-	200	-	-	10(10)	38.3 (41.3)	17.2
110/80(90)	230	-	-	170	-	-	14(n,8)	-	-	280	-	-	260	-	-	12	45.3	39
130/80(90)	235	-	-	180	-	-	16(n,8)	-	-	320	-	-	290	-	-	14	48.8	52.2



SELECTION & PERFORMANCE TABLE OF BLM-BC (HELI-WORM) SERIES

Size	Ratio	Input Power	Output		
			n_2 (r/min)	M_2 (N.m)	
40 / 63	75 (3x25)	0.12	18.7	42	
		0.18		49	
	90 (3x30)	0.12	15.6	45	
		0.18		61	
	120 (3x40)	0.12	11.7	50	
		0.18		52	
	150 (3x50)	0.12	9.3	46	
	180 (3x60)		7.8		
240 (3x80)	5.8				
300 (3x100)	4.7				
50/	63	75 (3x25)	0.18	18.7	62
	71	79.3 (3.17x25)	0.25	17.7	91
	63	90 (3x30)	0.18	15.6	69
	71	95.1 (3.17x30)	0.25	14.7	102
	63	120 (3x40)	0.18	11.7	85
	71	126.8 (3.17x40)	0.25	11	100
	63	150 (3x50)	0.12	9.3	66
			0.18		89
		180 (3x60)	0.12	7.8	74
			0.18		88
		240 (3x80)	0.12	5.8	78
			0.18		76
300 (3x100)	0.12	4.7	65		
63/	71	79.3 (3.17x25)	0.25	17.7	94
			0.37		139
		95.1 (3.17x30)	0.25	14.7	103
			0.37		153
		126.8 (3.17x40)	0.25	11	129
		0.37	11	191	
	63	150 (3x50)	0.18	9.3	101
	71	158.5 (3.17x50)	0.25	8.8	148
			0.37		176
	63	180 (3x60)	0.18	7.8	115
	71	190.2 (3.17x60)	0.25	7.4	151
	63	240 (3x80)	0.12	5.8	90
			0.18		136
	71	253.6 (3.17x80)	0.25	5.5	139
	63	300 (3x100)	0.12	4.7	101
			0.18		121
	71	317 (3.17x100)	0.25	4.4	128
	75/	80	75 (3x25)	0.55	18.7
0.75				247	
0.92				269	
71		79.3 (3.17x25)	0.37	17.7	143
80		90 (3x30)	0.55	15.6	225
			0.75		307
			0.92		300
71		95.1 (3.17x30)	0.37	14.7	160
80		120 (3x40)	0.55	11.7	278
71		126.8(3.17x40)	0.37	11	198
80		150 (3x50)	0.55	9.3	260
71		158.5 (3.17x50)	0.25	8.8	156
			0.37		231

Size	Ratio	Input Power	Output			
			n_2 (r/min)	M_2 (N.m)		
75/71	190.2 (3.17x60)	0.25	7.4	178		
		0.37		236		
		0.25		208		
90/	90 (3x30)	0.55	15.6	235		
		0.75		320		
		0.55		291		
	120 (3x40)	0.75	11.7	397		
		0.55		347		
	150 (3x50)	0.75	9.3	426		
		0.55		390		
	180 (3x60)	0.75	7.8	425		
		0.55		390		
	71	190.2 (3.17x60)	0.37	7.4	278	
	80	240 (3x80)	0.55	5.8	374	
	71	253.6 (3.17x80)	0.37	4.4	332	
			0.37		345	
	110/	90	72.6 (2.42x30)	1.1	19.3	384
				1.5		524
			1.8	629		
80		74 (3x25)	0.75		293	
90		96.8 (2.42x40)	1.1	14.5	498	
			1.5		697	
			1.8		815	
80		120 (3x40)	0.75		421	
90		121 (2.42x50)	1.1	11.6	587	
			1.5		801	
			1.8		768	
			1.1		673	
			1.5		733	
80		150 (3x50)	0.75	9.3	496	
			0.55		417	
90		180 (3x60)	0.75	7.8	569	
			0.55		648	
80		240 (3x60)	0.75	5.8	503	
	0.55		617			
80	300 (3x100)	0.55	4.7	585		
		1.1		390		
130/	90	72.6 (2.42x30)	1.1	19.3	390	
			1.5		531	
			1.8		638	
	90	96.8 (2.42x40)	1.1	14.5	498	
			1.5		679	
			1.8		815	
	90	121 (2.42x50)	1.1	11.6	596	
			1.5		813	
			1.8		976	
	90	145.2 (2.42x60)	1.1	9.6	673	
			1.5		917	
			1.5		1101	
	90	193.6 (2.42x80)	1.1	7.2	826	
			1.5		1013	
	80	240 (3x80)	0.75	5.8	698	
90	242 (2.42x100)	1.1	5.8	848		
80	300 (3x100)	0.55	4.7	585		
		0.75		797		